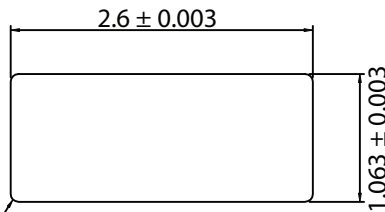
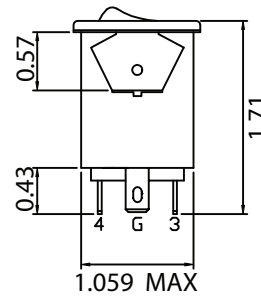
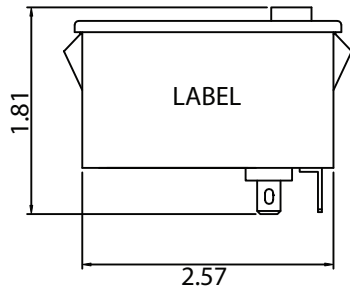
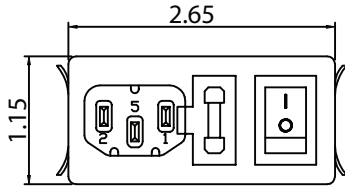


THESE DRAWINGS ARE THE PROPERTY OF QUALTEK ELECTRONICS AND NOT TO BE REPRODUCED FOR OR COMMUNICATED TO A THIRD PARTY WITHOUT THE EXPRESS WRITTEN PERMISSION OF AN OFFICER OF QUALTEK ELECTRONICS.

| REVISION | | | |
|----------|------------------------|----------|----------|
| REV. | DESCRIPTION | DATE | APPROVED |
| B | RoHS Compliancy | 06-01-06 | DP |
| C | Updated Specifications | 01-24-08 | DP |

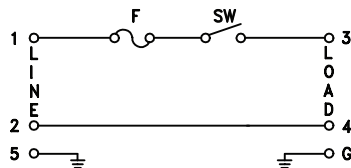
MECHANICAL DIMENSIONS:



R0.04 MAX- PANEL CUTOUT

RECOMMENDED PANEL THICKNESS: 0.04~0.07in

ELECTRICAL SCHEMATIC:



ELECTRICAL CHARACTERISTICS:

- 1-1. VOLTAGE RATING.....115/250VAC
- 1-2. CURRENT RATING
 - A. @ 115/250 VAC (UL, CSA)6/6 A RMS MAX
 - B. @ 250 VAC (SEMKO)6 A RMS MAX
- 1-3. OPERATING FREQUENCY.....50-60Hz
- 1-4. LEAKAGE CURRENT EACH LINE TO GROUND
 - A. AT 115VAC 60Hz.....2uA MAX.
 - B. AT 250VAC 50Hz.....5uA MAX.
- 1-5. HIPOT RATING (FOR ONE MINUTE)
 - A. LINE TO GROUND.....2000 VAC
 - B. LINE TO LINE.....2000 VAC
- 1-6. MINIMUM INSULATION RESISTANCE: @ 500VDC
 - A. LINE & NEUTRAL TO GROUND.....100M OHM
 - B. LINE TO NEUTRAL.....100M OHM
- 1-7. AMBIENT TEMPERATURE 25°C
- 1-8. OPERATING TEMPERATURE -25°C TO +85°C
- 1.9. APPROVALS: UL, CSA, SEMKO
- 1-10. RoHS COMPLIANT

CONTROLLED

| Dim range (mm) | Tolerance +/- (mm) | Qualtek Electronics Corp. PPC DIVISION | | |
|----------------|--------------------|---|-----------------|-----------------|
| | | Part Number: 762-18/002 | RoHS Compliant | |
| 0-1 | 0.15 | Description: MULTI-FUNCTION MODULE | | |
| 1-6 | 0.20 | | | |
| 6-18 | 0.30 | UNIT: in | REV. C | |
| 18-50 | 0.50 | | Approved / Date | |
| 50-120 | 0.70 | Drawn / Date | Checked / Date | Approved / Date |
| 120-250 | 0.90 | B.ZHANG 03-19-04 | 03-19-04 | JJH / 03-19-04 |
| 250-500 | 1.20 | | | |